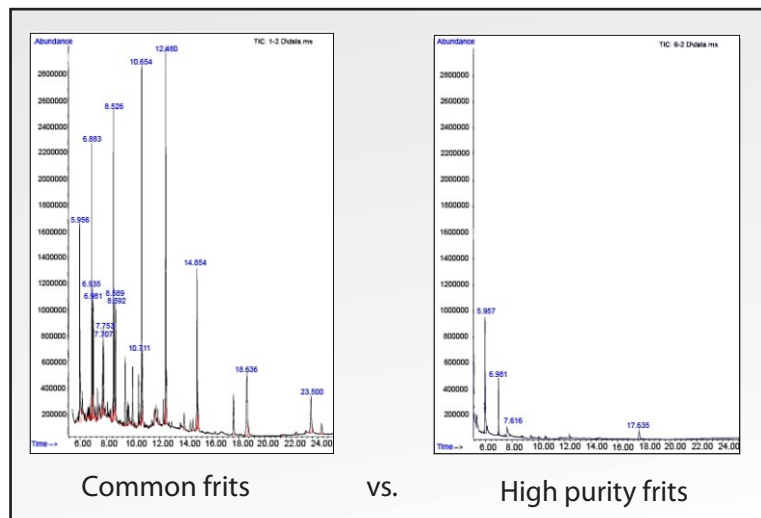


## Solid Phase Extraction Columns

Aurora provides high quality solid phase extraction (SPE) columns for rapid and effective extractions. These silica (C8, C18, Florisil, etc.) and polymer-based (HLB, MAX, MCX, etc.) columns provide consistently high recoveries and specificity. These columns can be used in a wide range of manual and automated protocols for clinical chemistry, pharmaceutical, forensic, tobacco and food safety applications.

### Features:

- Columns with high purity frits to ensure complete isolation of targeted compounds with no impurities
- Uniform, spherical filler particles for excellent performance and reproducible results



### Key Applications

- Automation of sample preparation
- Clean-up, isolation & concentration of biological analytes such as:
  - Vitamin D from blood / serum samples
  - Drugs of abuse in forensic samples
  - Compounds for drug discovery
  - Iso-flavonoides from urine samples
  - Aflatoxins using malachite green in fish products
  - Melamine in food
  - Semi-volatile or non-volatile analytes

