

VERSA® Solid Phase Extraction Workstation

Aurora's VERSA® Solid Phase Extraction (SPE) workstation offers efficient extraction with the capacity of processing up to 72 cartridges sequentially. The on-deck modules such as positive pressure applicator, N₂ dryer, and optional Shaker-Heater allow for pre-extraction sample preparations and post extraction derivitization of analytes. Throughout the SPE process and transfer of eluted or derivitized sample to GC/LCMS vials, the VERSA® workstation utilizes disposable tips to eliminate cross-contamination.

The compact 4 channel VERSA® 10 SPE workstation offers an automated solution for 1 and 3 mL cartridge at low throughput extractions at an affordable price. The VERSA® 1100 SPE offers the most flexibility by accommodating 1, 3 and 6 mL cartridges as well as 96-cartridge SPE plate formats. Researchers can enjoy the freedom to achieve full optimization of any SPE protocol by having both positive pressure applicator and/or negative pressure (vacuum manifold) on-deck with bulk dispensing ReagentDrop module.

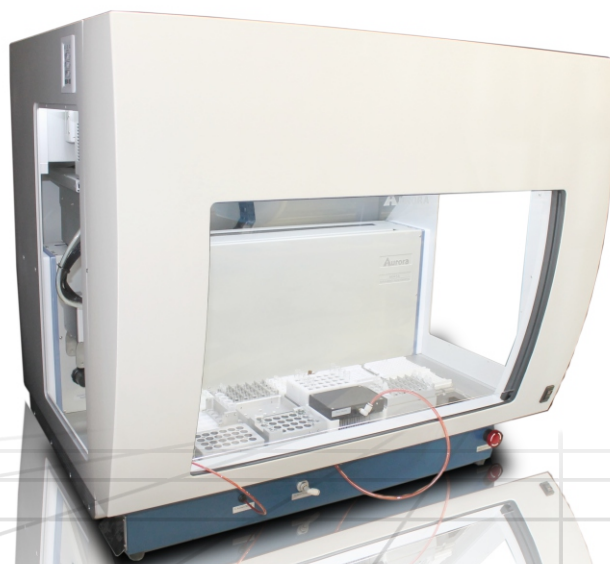
FEATURES & BENEFITS

- 4 or 8 channel disposable tip syringe pipettor with single channel functionality offers versatility and prevents cross-contamination
- 5 to 8 channel ReagentDrop on VERSA® 1100 SPE conserves reagents and saves tip costs
- Compatibility with organic and aqueous reagents
- SPE formats: 1, 3 and 6 mL cartridges or 96 SPE cartridge plates
- Gripper enables on-deck:
 - Negative or positive pressure for efficient flow through the cartridges
 - N₂ drying and derivatization
- Shaker-Heater (RT to 90°C) for efficient sample pre-processing and derivatization
- Capability to perform Liquid Liquid Extraction
- Open system - Compatibility with diverse kit chemistry and labware
- Exhaust provision for volatile reagents

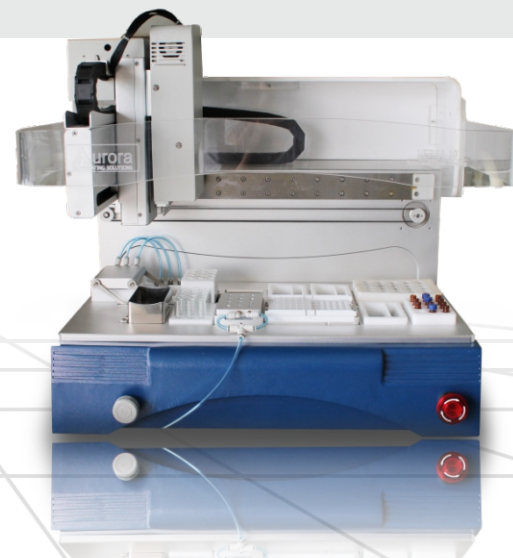
APPLICATIONS

- Clean-up, isolation and concentration of biological analytes such as:
 - Food safety
 - Vitamin D from blood / serum samples
 - Drugs of abuse in forensic analysis
 - Compounds for drug discovery
 - Iso-flavonoides from urine samples
 - Aflatoxins from seafood products
 - Growth promoters in blood
 - Semi-volatile or non-volatile analytes
- Automation of sample preparation

Liquid Handling

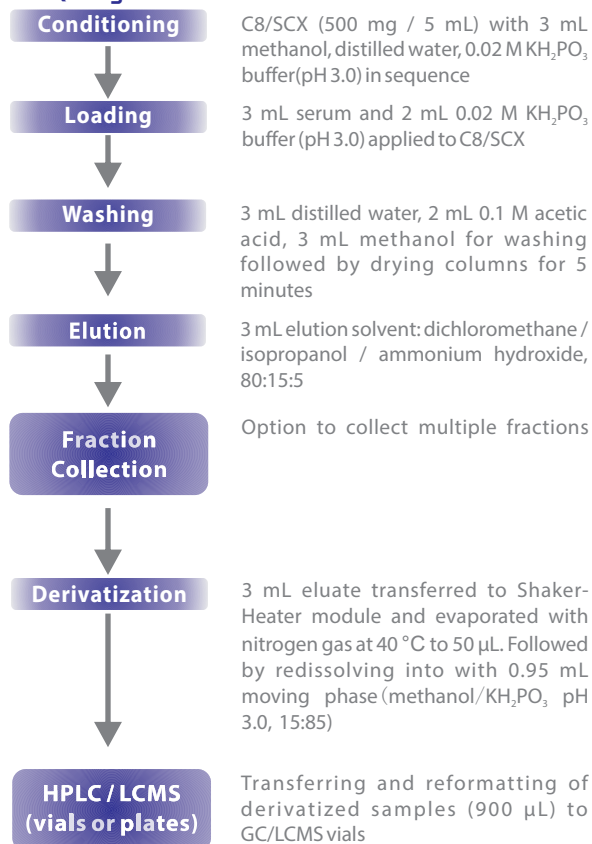


VERSA® 1100 SPE Workstation

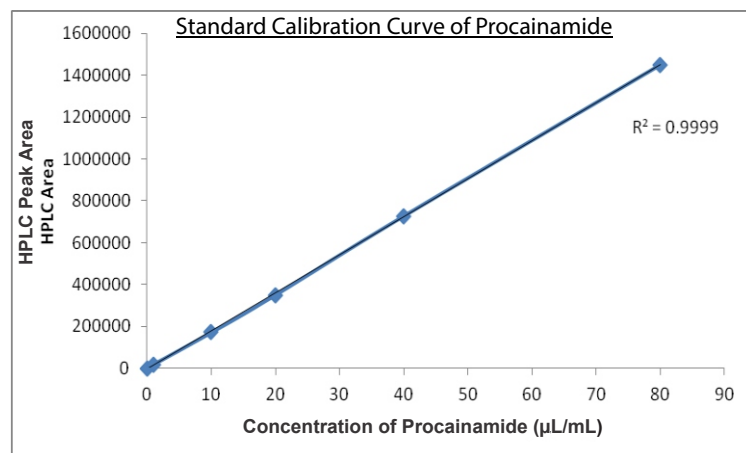


VERSA® 10 SPE Workstation

SAMPLE WORKFLOW ON VERSA® SPE (using Aurora Biomed's C8/SCX columns)



VALIDATION DATA ON PROCAINAMIDE



Average recovery of procainamide from each replicated experiment (n=11).

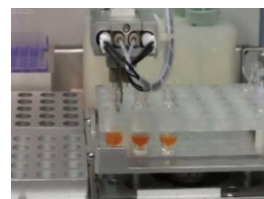
	Average Recovery %	Standard Deviation %	CV %
Batch 1	88.51	2.47	2.79
Batch 2	98.35	4.62	4.70
Batch 3	87.86	3.82	4.35
Batch 4	92.99	4.06	4.37

CONSUMABLES



1, 3, 6 mL cartridges
and 96 SPE cartridge plates

OPTION



Liquid Liquid Extraction

SPECIFICATIONS

	VERSA® 10	VERSA® 1100
Volume (µL)	1 - 1000	1 - 1000
Deck Capacity	5 upper and 2 lower deck positions	15 deck positions
Pipetting Head (disposable tip)	4 channel syringe pipettor	4 or 8 channel syringe pipettor
ReagentDrop	N/A	5 to 8 channel ReagentDrop
Supported Cartridges	1 or 3 mL standard cartridges	1, 3 or 6 mL cartridges or 96 SPE cartridge plate
Pressure Module	12 channel positive pressure module	4 channel positive pressure module and/or vacuum manifold (negative pressure)
Nitrogen Dryer	12 channels	24 or 96 channels
Shaker-Heater (2400rpm, RT to 90°C)	Included	Optional
Accessory Options	<ul style="list-style-type: none"> • HEPA / UV / LED light enclosure • Reagent block cooler (2-90°C) • Other adaptors available 	<ul style="list-style-type: none"> • HEPA / UV / LED light enclosure • Reagent block cooler (2-90°C) • Liquid level sensing for liquid-liquid extractions • Other adaptors available
Width x Depth x Height (cm)	64 x 49 x 55	99 x 75 x 90
Weight (kg)	30	162

NOTE: Instrument specifications may change without notice as an ongoing effort of product improvement.

For more information please email
info@science.nz or freephone 0800 724 633

ScieNZe
Applications • Instrumentation • Service