

\ “Simplify your laboratory workflow” /

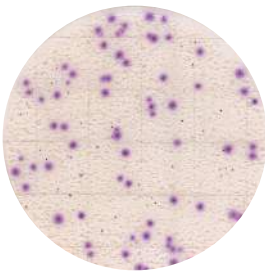
Prepared media plate

Easy PlateTM YM-R

-Rapid type for Yeast and Mold

Molded Salami

- Easy Plate YM-R



48 hours incubation

- PDA Medium



120 hours incubation

*Data is provided by Center for Fungal Consultation, incorporated nonprofit organization

Colonies are clearly colored in 48 hours.
Shorter incubation time than agar media!
Colonies develop a purple color, making it easy to identify and count colonies even in the presence of food residues.



• Interpretation

Colored as purple colonies

If you want to distinguish between yeast and mold, please refer to the following.

Yeast: Colonies are small circle and have defined edges.

Mold: Colonies are large and have diffuse edges.

Product Code: 61977

Incubation temperature: 25°C±1

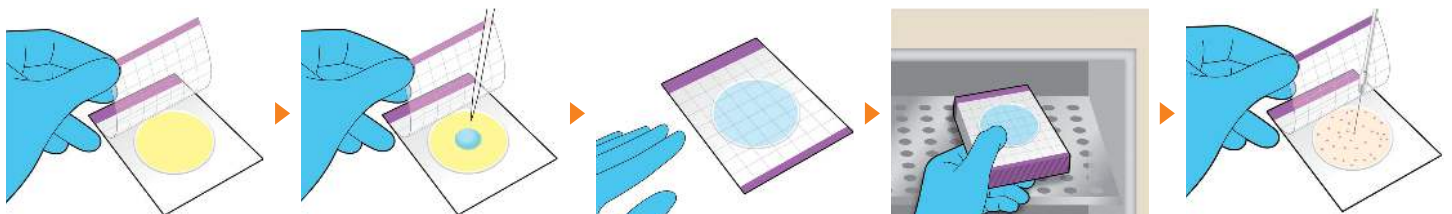
Incubation time: 48±2 hours

*If coloration is unclear, perform an additional 24-hours incubation

Storage condition (Unopened) 2-8°C

Shelf life: 18 months after manufacturing date

how to use

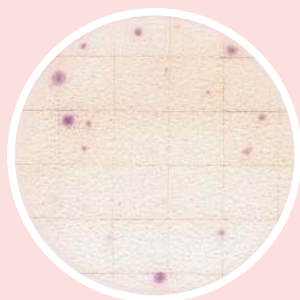


Example colonies of **48 hours** incubation

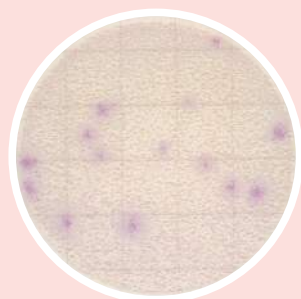
Foods



Dressing
+*Wickerhamomyces*
anomalus



Mixed powder

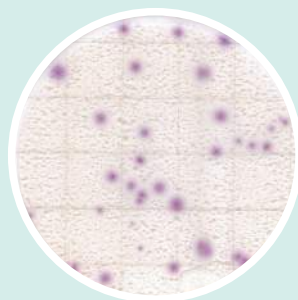


Egg powder
+*Aspergillus niger*

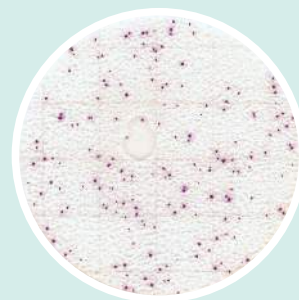


Sweet

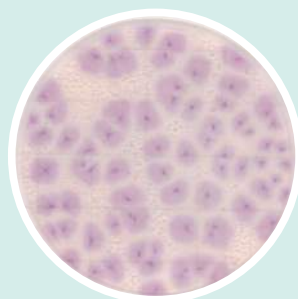
Strains



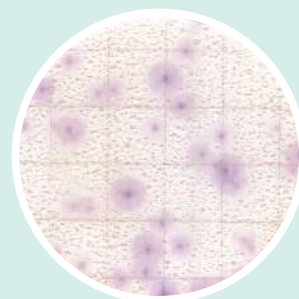
Aureobasidium
pullulans



Zygosaccharomyces
rouxii



Geotrichum
candidum

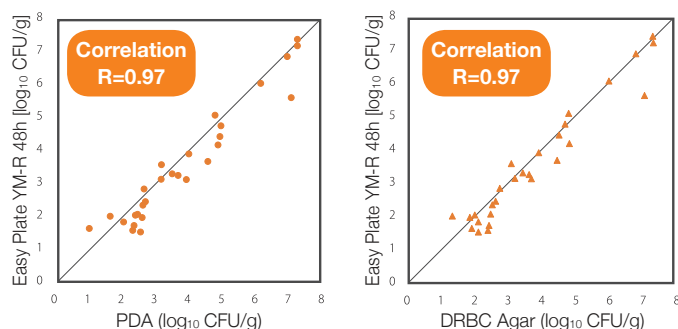


Aspergillus
flavus

*Data is provided by Center for Fungal Consultation, incorporated nonprofit organization

• Excellent media performance

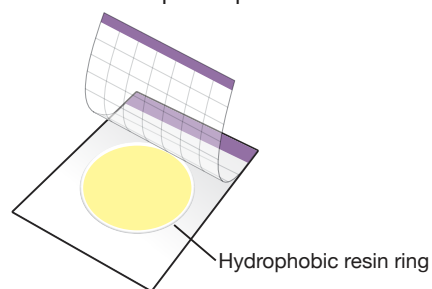
High correlation with agar media has been confirmed for a wide variety of foods



*Data is provided by Center for Fungal Consultation, incorporated nonprofit organization

• Easier-to use

Simply close the cover film and the sample suspension spreads evenly across the plate surface -without the need to use a plate spreader.



The plate surface is also surrounded by a unique hydrophobic resin ring to control the sample suspension and prevent leaks.

Easy Plate Series

Easy Plate AC - Aerobic Bacteria
Easy Plate CC - Coliform
Easy Plate EC - *E. coli*/ Coliform
Easy Plate SA - *S. aureus*

Kikkoman Biochemifa Company

2-1-1 Nishi-shinbashi, Minato-ku, Tokyo 105-0003 JAPAN
biochemifa@mail.kikkoman.co.jp
<https://biochemifa.kikkoman.com/e/>

For more
information

